

X SERIES PTZ



The XPTZ4XIP8MP-AI X Series PTZ Security Camera is a high-performance surveillance solution designed for comprehensive security needs. With its 8MP resolution, it delivers sharp and detailed images, while the motorized 2.8-12mm lens provides versatile zoom capabilities with 4X optical zoom. The camera excels in various lighting conditions, featuring advanced color night vision and IR capability up to 30 meters to ensure clear images in complete darkness. Integrated deterrence lights help deter potential intruders, and the built-in speaker and microphone enable two-way audio communication. Its robust design is dustproof and water-resistant, making it suitable for both indoor and outdoor environments. This versatile and durable security camera is an ideal choice for enhancing your property's security.



XPTZ4XIP8MP-AI



8MP RESOLUTION



**MOTORIZED LENS
2.8-12MM**



IR UP TO 30M



4X OPTICAL ZOOM



DETERRENCE LIGHTS



**BUILT-IN SPEAKER &
MICROPHONE**



**SEE IN COLOR
AT NIGHT**



**DUSTPROOF &
WATER-RESISTANT**



**MICRO SD CARD
SLOT UP TO 256GB**



CAMERA

| | |
|-------------------|---|
| IMAGING SENSOR | 1/2.7" Progressive Scan CMOS |
| MAX. RESOLUTION | 3840x2160 |
| MIN. ILLUMINATION | Color: 0.009 Lux @ (F1.6, AGC ON), B/W: 0 Lux with IR |
| SHUTTER SPEED | 1/5 s to 1/20000 s |
| SLOW SHUTTER | Yes |
| DAY & NIGHT | IR cut filter |
| ZOOM | 4x optical |

LENS

| | |
|------------------------|--|
| FOCAL LENGTH | 2.8 mm to 12 mm |
| FOV | Horizontal field of view: 113° to 31.4° (wide-tele) Vertical field of view: 58.4° to 17.6° (wide-tele) Diagonal field of view: 138.6° to 36° (wide-tele) |
| APERTURE | Max. F1.6 |
| FOCUS | Auto, manual |
| SUPPLEMENT LIGHT RANGE | IR Distance: up to 30 m |
| SUPPLEMENT LIGHT TYPE | IR |

PTZ

| | |
|----------------------|---|
| MOVEMENT RANGE(PAN) | 350° |
| MOVEMENT RANGE(TILT) | 0° to 90° |
| PAN SPEED | Pan speed: configurable from 0.6° to 54°/s |
| TILT SPEED | Tilt speed: configurable from 0.6° to 52°/s |
| PRESETS | 255 (Preset calls have a limit of 20,000 times) |
| 3D POSITIONING | Yes (without ZOOM in) |

IMAGE

| | |
|--------------------------|---|
| DAY/NIGHT SWITCH | Day, Night, Auto, Schedule |
| IMAGE ENHANCEMENT | BLC, HLC, 3D DNR |
| WIDE DYNAMIC RANGE (WDR) | DWDR |
| DEFOG | NA |
| IMAGE STABILIZATION | NA |
| IMAGE SETTINGS | Saturation, brightness, contrast, sharpness, Hue and white balance adjustable by client software or web browser |
| PRIVACY | 4 privacy masks |

VIDEO

| | |
|--------------------------|--|
| MAIN STREAM | 50/60 Hz: 25 fps (3840x2160, 3072x1728, 2592x1944, 2592x1520, 2304, 1296, 1920x1080, 1280x960, 1280x720) |
| SUB-STREAM | 50/60 Hz: 25 fps (1280x720, 640x480, 320x240) |
| THIRD STREAM | 50/60 Hz: 25 fps (640x480, 320x240) |
| VIDEO COMPRESSION | Main stream: H.265+/H.265/H.264+/H.264 Sub-stream: H.265+/H.265/H.264+/H.264/MJPEG Third stream: H.265+/H.265/H.264+/H.264 |
| VIDEO BIT RATE | 8 kbps to 16384 kbps |
| H.264 TYPE | Baseline Profile/Main Profile/High Profile |
| H.265 TYPE | Main Profile |
| REGION OF INTEREST (ROI) | NA |
| AUDIO COMPRESSION | G.711a/G.711u |

NETWORK

| | |
|--------------|--|
| PROTOCOLS | IPv4/IPv6, HTTP, HTTPS, FTP, SMTP, UPnP, SNMP, DNS, DDNS, NTP, RTSP, TCP/IP, UDP, DHCP, PPPoE |
| API | Onvif (Profile S, Profile G, Profile T), Http API |
| SIMULTANEOUS | Live View Up to 15 channels |
| USER/HOST | 5 User |
| SECURITY | Password protection, complicated password, HTTPS encryption, IP address filter, control timeout settings |
| CLIENT | VMS |
| WEB BROWSER | IE11, Chrome 57+, Firefox 52+, Safari 11+ |

EVENT

| | |
|------------------------|---|
| BASIC EVENT | Motion detection |
| DEEP LEARNING FUNCTION | Face Recognition, Human & Vehicle Detection, Perimeter Intrusion Detection, Line Crossing Detection, Stationary Object Detection, Crossing Counting, Heat Map, Crowd Density Detection, Queue Length Detection, License Plate Detection |
| SMART TRACKING | NA |
| ALARM LINKAGE | Upload to FTP, send email, trigger recording, audible warning, lights flashing |

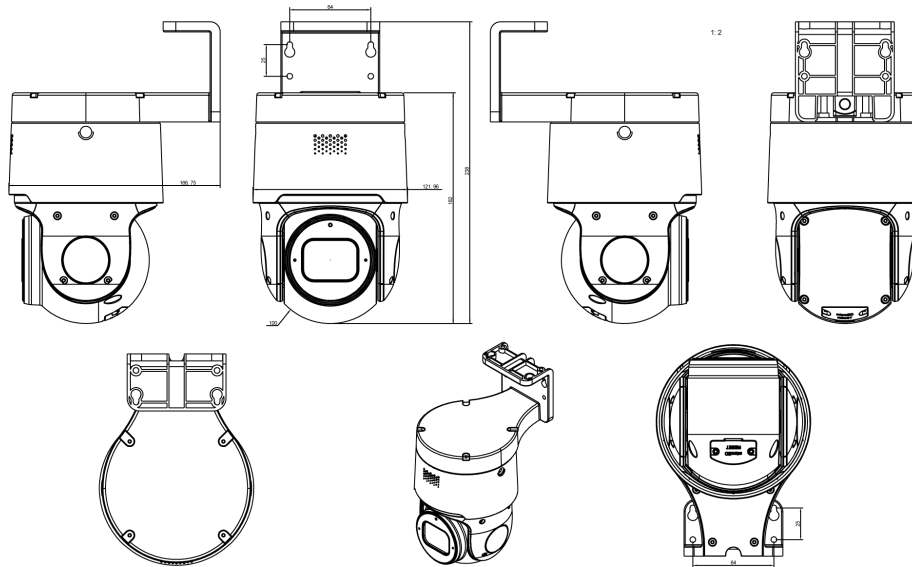
INTERFACE

| | |
|--------------------|---|
| ETHERNET INTERFACE | 1 RJ45 10M/100M self-adaptive Ethernet port |
| ON-BOARD STORAGE | Built-in memory card slot, support microSD/SDHC/SDXC card, up to 256 GB |
| ALARM | Built-in red & blue flashing lights |
| AUDIO | 1 built-in MIC |
| RESET | Yes |
| BUILT-IN SPEAKER | 1 built-in speaker |

GENERAL

| | |
|---------------------|---|
| POWER | DC 12V/POE, max. 13 W |
| OPERATING CONDITION | -30 °C to 60 °C (-22 °F to 149 °F) Humidity 90% or less (non-condensing) |
| MATERIAL | Plastic |
| DIMENSION | Ø 166.75 mm × 238 mm (Ø 6.56" × 9.37") |
| WEIGHT | Approx. 0.92 kg (2 lb.) |
| PROTECTION | IP66 |

DIMENSIONS



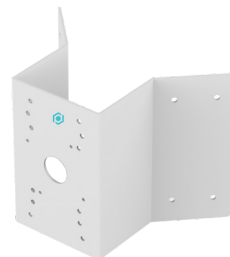
ACCESSORIES



INJPOE90W
90 WATTS POE INJECTOR



CMB6-P
CEILING MOUNT BRACKET



COMB6
CORNER MOUNT BRACKET



PMB6
POLE MOUNT BRACKET