

MODEL #

LPRB9Z832IP8MP-AI



HIGH SPEED **LICENSE** **PLATE RECOGNITION**

Onvif® | GSI | NDAA Compliant | A



The **LPRB9Z832IP8MP-AI** Security Camera offers exceptional 8MP resolution for crystal-clear surveillance, ensuring no detail is missed. Equipped with precise iris support, it captures high-quality images even in low light conditions. Experience superior night vision with Spectral Light technology, allowing you to see in full color even in total darkness. With features like two-way communication, 2X alarm, and 1X audio in/out, this camera is perfect for real-time interaction, advanced security management, and enhanced monitoring, day or night.

8MP
RESOLUTION



8MP
Resolution

8-32MM
Motorized Lens



IR Up to 100M

Spectral



Deterrence
Lights

Microphone &
Speaker



AI+ Features
Supports
Precise Iris

IK10
Dust, Water &
Impact Resistant



IP67
Water-Resistant
& Dustproof

Micro SD Card
Slot up to 1TB





HIGH SPEED LICENSE PLATE RECOGNITION

MODEL #
LPRB9Z832IP8MP-AI

VIDEO

Imaging Device	1/1.8"
Effective Pixels	8MP 3840(H)×2160(V)
Scanning System	Progressive CMOS
Min. Illumination	Color: 0.0008 Lux @ (F1.7, AGC ON);0 Lux with IR

OPERATIONAL

IR LED	8
Warmlight	4
IR Viewable Length	Up to 100m
Warmlight Viewable Length	Up to 30m
Type of Complementary Light	Default warm light, switchable infrared light
Motion Detection	Off/On (8 Level)
Wide Dynamic Range	120dB
Digital Noise Reduction	3D DNR
Image Setting	Full Color Mode/Day&Night Mode/Smart Illumination
White Balance	Auto/Manual
Electronic Shutter Speed	1/5 ~ 1/20000s
On-Board Storage	Micro SD slot, up to 1TB
Alarm	2 inputs, 2 outputs
Audio	1 input, 1 output, 1 Built-in microphone
Audio & Light Alarm	1/1.8" Progressive Scan CMOS
Dual Modes	Customizable Voice
Dual Light Sources	24/7 All-weather Color Images
Custom Voice	Yes
Hardware Reset	Yes
Smart Features	Rare Sound Detection (SD) , Face Detection (FD), Stationary Object Detection (SOD), Crowd Density Detection (CD), Human&Vehicle Detection (PD&VD), Line Crossing Detection (LCD), Queue Length Detection (QD), Heat Map (HM), Cross Counting (CC), License Plate Detection (LPD), Region Entrance and Exiting (RE), Intrusion
LPR Vehicle Speed	Up to 120km/h

LENS TYPE

Focal Length (Zoom Ratio)	8-32mm (fast zoom)
Max. Aperture Ratio	F1.7 to F 1.76
Angular Field of View	H:40(W)-14(T)° V:27(W)-10(T)° D:49(W)-17(T)°
Min. Object Distance	W:1.5 m ~ INF, T:2.5 m ~ INF
IRIS Type	Precise IRIS

NETWORK

Ethernet	RJ45(10/100BASE-T)
Video Compression Format	H.265/H.264/H.265+/H.264+/MJPEG
Resolution	Main Stream @30fps: 8MP(3840x2160), 5MP(3072x1728,2592x1944), 4MP(2592x1520), 3MP(2304x1296), 1080P(1920x1080), 720P(1280x720) Sub Stream @30fps: 1080P(1920x1080), 720P(1280x720), VGA(640x480) Mobile Stream @30fps: VGA(640x480), QVG(320x240)
Video Quality Adjustment	256Kbps ~ 16Mbps
Bitrate Control Method	CBR/VBR
IP	IPv6
Protocol	TCP/IP,HTTP,DHCP,DNS,DDNS,RTP/RTSP,SMTP,NTP,UPnP,SNMP,HTTPS,FTP
Security	IP address filter;complicated password;Authenticated username and password
Application Programming Interface	ONVIF(Profile S/G/T)
Compatible Web Browsers	IE10/11, Safari V12.1 above, Firefox V.52 above Google chrome V.57 above, Edge V.79 above

GENERAL

Operating Conditions	-35~+60°C/less than ≤ 90% RH
Ingress Protection	IP67, IK10, NEMA 4X
Input Voltage / Current	D12V/POE
Power Consumption	DC12V: max 10.24W; POE (48V): max 12.28W
Material	Metal
Dimension (LXHP)	353.8mm×135.2mm

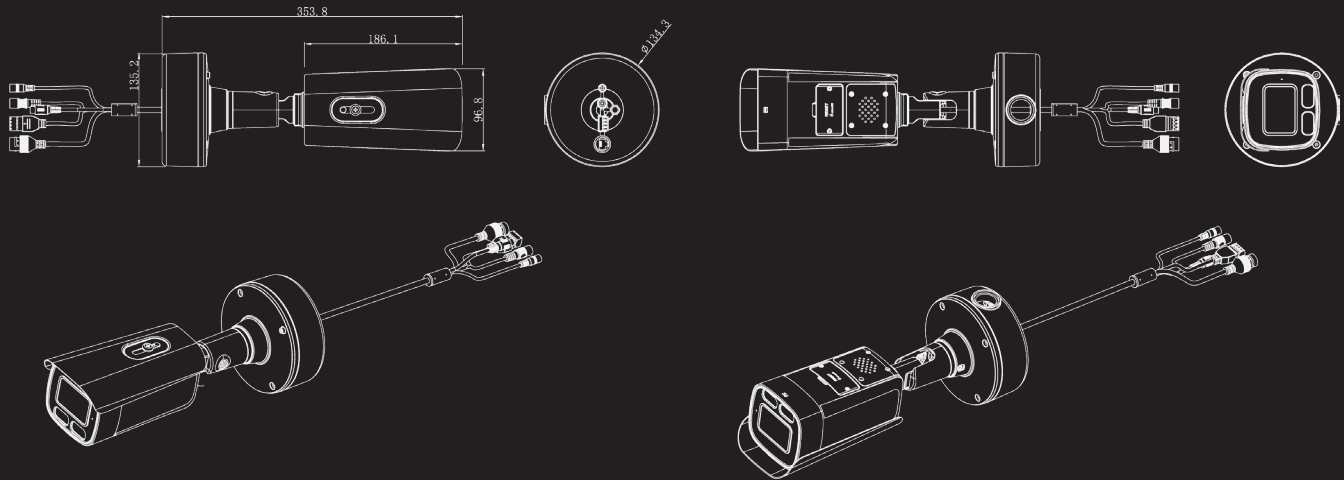




HIGH SPEED LICENSE PLATE RECOGNITION

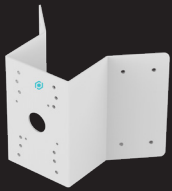
MODEL #
LPRB9Z832IP8MP-AI

DIMENSIONS



COMPATIBLE ACCESSORIES

CORNER MOUNT SOLUTION



COMB6
CORNER MOUNT BRACKET

POLE MOUNT SOLUTION



PMB6
POLE MOUNT BRACKET

WALL MOUNT SOLUTION



WMB5
WALLMOUNT BRACKET

OR



WMB6
WALLMOUNT BRACKET

+



EB3BASE3-G
PENDANT

JUNCTION BOX



TEBBASE1
JUNCTION BOX

DOWNLOAD THE OV CONNECT APP



WWW.GSDGROUPINC.COM



A CANADIAN ENTERPRISE