

MODEL #

**B7T4IP5MP-AI**



# *THERMAL* **NETWORK CAMERA**



**5MP**  
RESOLUTION



**5MP**  
Resolution

**3.6MM Lens**



**IR Up to 45M**

**TotalView**



**Alarm/Audio**  
**In/Out**

**Temperature**  
**Measurement**



**IP67**  
**Dustproof**  
**& Water-Resistant**

**Micro SD Card**  
**Slot up to 1TB**

Discover our **B7T4IP5MP-AI** thermal imaging camera, offering advanced security features. With 5MP resolution, it delivers crystal-clear images, capturing every detail with precision. Two-way communication enables real-time interaction, improving situational awareness. The in/out alarm adds a layer of security by alerting to potential threats. Equipped with temperature measurement capabilities, it goes beyond traditional monitoring by identifying anomalies. The bi-spectrum fusion image offers a unique view by combining thermal imaging with optical channel details. Invest in unrivalled safety with our thermal imaging camera.



## THERMAL MODULE

<b>Image Sensor</b>	Vanadium Oxide Uncooled Focal Plane Arrays
<b>Max. Resolution</b>	256×192
<b>Pixel Interval</b>	12µm
<b>Response Waveband</b>	8-14µm
<b>Netd (noise equivalent temperature difference)</b>	≤40mk@25°C F#1.0, 25Hz
<b>Lens (Focal Length)</b>	3.2mm
<b>IFOV</b>	3.75 mrad
<b>Field Of View</b>	56°x42°
<b>Min. Focusing Distance</b>	0.3m
<b>VCA Distance Human</b>	18.6m (61ft)
<b>VCA Distance Vehicle</b>	49m (161ft)
<b>Heat Detection Distance</b>	20m(66ft)
<b>Aperture</b>	F1.1

## OPTICAL MODULE

<b>Max. Image Resolution</b>	2592*1944
<b>Image Sensor</b>	1/2.7" Progressive Scan CMOS
<b>Min. Illumination</b>	Color: 0.003 Lux @(F1.6, AGC ON), B/W: 0 @ IR ON
<b>Shutter Speed</b>	1/5 s to 1/100,000 s
<b>Lens (Focal Length)</b>	3.6mm
<b>Field of View</b>	Horizontal: 81°, Vertical: 57°, Diagonal: 108°
<b>WDR</b>	120 dB
<b>Day &amp; Night</b>	IR cut filter with auto switch
<b>BI-Spectrum Image Fusion</b>	Fusion view of thermal view and overlaid details of the optical channel
<b>Supplement Light Type</b>	IR and Warm Light
<b>Supplement Light Range</b>	Up to 30 m (IR) / 15m (Warm light)
<b>IR Wavelength</b>	850nm
<b>Smart Supplement Light</b>	Yes
<b>Warning Light</b>	1 Red & 1Blue flashing light

## NETWORK

<b>Main Stream</b>	<b>Visible Light: 50Hz@25fps;</b> 5MP(2592x1944),4MP(2592x1520),3MP(2304x1296), 1080P(1920x1080), 960P(1280*960),720P(1280x720) 60Hz@30fps; 5MP(2592x1944),4MP(2592x1520),3MP(2304x1296), 1080P(1920x1080), 960P(1280*960),720P(1280x720) <b>Thermal:</b> 50Hz/60Hz@25fps; 1280×720, 640x480
<b>Sub-Stream</b>	<b>Visible Light:</b> 50Hz@25fps; 720P(1280x720),VGA(640x480), QVGA(320x240) 60Hz@30fps; 720P(1280x720),VGA(640x480),QVGA(320x240) <b>Thermal:</b> 50Hz/60Hz@25fps; 640 x 480, 320x240
<b>Mobile Stream</b>	<b>Visible Light:</b> 50Hz@25fps; VGA(640x480),QVGA(320x240) 60Hz@30fps; VGA(640x480),QVGA(320x240)
<b>Video Compression</b>	H.265/H.265+/H.264/H.264+MJPEG
<b>Audio Compression</b>	G.711u/G.711a
<b>Protocols</b>	TCPIP,HTTP,DHCP,DNS,DDNS,RTPRTSP,SMTP, NTP,UPnP,SNMP,HTTPS,FTP
<b>User/Host Level</b>	3 users, 2 levels: Administrator, User
<b>Security Measures</b>	User authentication (ID and PW), HTTPS encryption, IP address filtering

## INTEGRATION

<b>Alarm Input</b>	1-ch inputs
<b>Alarm Output</b>	1-ch outputs
<b>Alarm Action</b>	SD recording/Alarm output/smart capture/FTP upload/email linkage/ audio alarm/Red & Blue flashing light
<b>Audio Input</b>	1-ch
<b>Audio Output</b>	1-ch outputs/ 1 Built-in speaker
<b>Reset</b>	Yes
<b>Communication Interface</b>	1, RJ45 10M/100M self-adaptive Ethernet interface.
<b>SD Memory Card</b>	Built-in micro SD card slot (up to 1TB)
<b>Analog Video Output (BNC)</b>	NA
<b>Web Browser</b>	IE10/11, Safari V12.1 above, Firefox V.52 above, Google chrome V.57 above, Edge V.79 above

**SMART FUNCTION**

<b>Temperature Measurement</b>	Gobal, 12 points, 12 areas, and 12 line.
<b>Temperature Range</b>	-20 °C to + 150 °C (-4 °F to + 302°F)
<b>Temperature Accuracy</b>	± 8 °C (± 14.4 °F)
<b>Fire Detection</b>	Yes
<b>AI Features</b>	Optical: Intrusion, Region Entrance, Region Exiting, Line Crossing, Pedestrian & Vehicle, Object Detection, Crossing Counting, Crowd Density, Queue Length, Heat MAP, Rare Sound, Face Detection Thermal: Intrusion, Region Entrance, Region Exiting, Line Crossing detection, Fire detection, Temperature exception alarm, Pedestrian & Vehicle

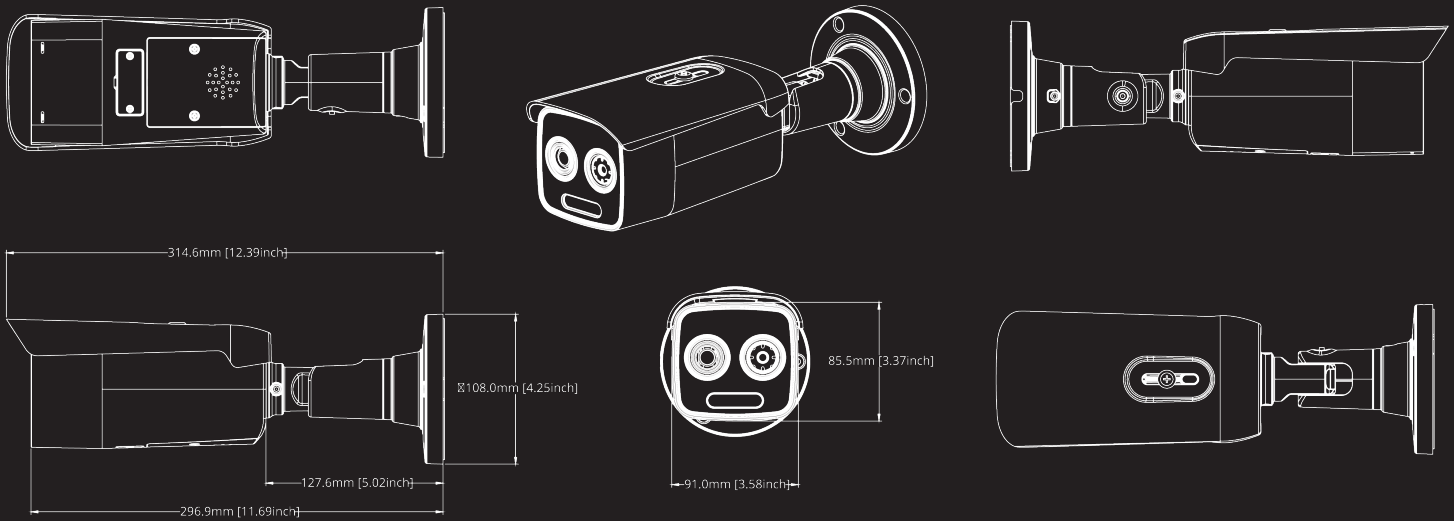
**GENERAL**

<b>Menu Language</b>	English, Russian, German, Italian, French, Portuguese, Spanish, Turkish, Japanese
<b>Power</b>	12 VDC ± 20%, PoE (802.3af)
<b>Power Consumption</b>	Max.10.4W
<b>Working Temperature/ Humidity</b>	Temperature: -35 °C to 60 °C (-31 °F to 140 °F) ; Humidity: 90% or less
<b>Protection level</b>	IP67
<b>Dimensions</b>	108mm*314.6mm(4.25"*12.39")
<b>Weight</b>	Approx. 1.25kg(2.76lb)
<b>Environment</b>	RoHS2.0

DOWNLOAD THE OV CONNECT APP

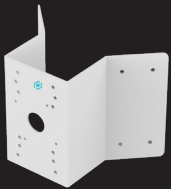


## DIMENSIONS



## COMPATIBLE ACCESSORIES

### CORNER MOUNT SOLUTION



 **COMB6**  
CORNER MOUNT BRACKET

### POLE MOUNT SOLUTION



 **PMB6**  
POLE MOUNT BRACKET

### WALL MOUNT SOLUTION



 **WMB5**  
WALLMOUNT BRACKET

**OR**



 **WMB6**  
WALLMOUNT BRACKET

**+**



 **EB3BASE3-G**  
PENDANT

### JUNCTION BOX



 **TEBBASE1**  
JUNCTION BOX