

MODEL #

**EB2FD28TVI-5MP-B**



FENNEC SERIES



# HD ANALOG **EYEBALL CAMERA**



**5MP**  
RESOLUTION



**5MP**  
Resolution

**2.8MM Wide**  
Lens



**IR Up to 20M**

**Power 12V/DC**

Enhance your security setup with the Eyeball **EB2FD28TVI-5MP-B** analog camera. Boasting a remarkable 5MP resolution and a wide 2.8mm lens, this camera provides unparalleled clarity and a broad field of view for comprehensive surveillance. Whether you're safeguarding your home or business premises, this analog camera delivers top-notch performance in any environment.

This camera model is also available in white - EB2FD28TVI-5MP



**IP67**  
**Dustproof**  
& **Water-Resistant**

**TVI-CVI-**  
**AHD-960H**



**VIDEO**

<b>Imaging Device</b>	1/2.7" CMOS (SC4653 )
<b>Effective Pixels</b>	5.0 Mega Pixels
<b>Scanning System</b>	progressive scanning
<b>Electronic Shutter Speed</b>	1/25s~1/50,000s , 1/30s~1/60,000s
<b>Min. Illumination (Day)</b>	Color 0.01Lux@F1.2
<b>Min. Illumination (Night)</b>	B/W 0.001 Lux@F1.2
<b>S/N Ratio</b>	More than 50dB (AGC OFF)
<b>IR Distance</b>	20M
<b>IR ON/OFF Control</b>	Auto
<b>IR LEDS</b>	18 pieces SMD LEDs

**LENS**

<b>Lens Type</b>	2.8mm
<b>Mount Type</b>	Fixed
<b>Focal Length</b>	No
<b>Max Aperture</b>	F2.0
<b>Angle of View</b>	120°
<b>Focus Control</b>	No

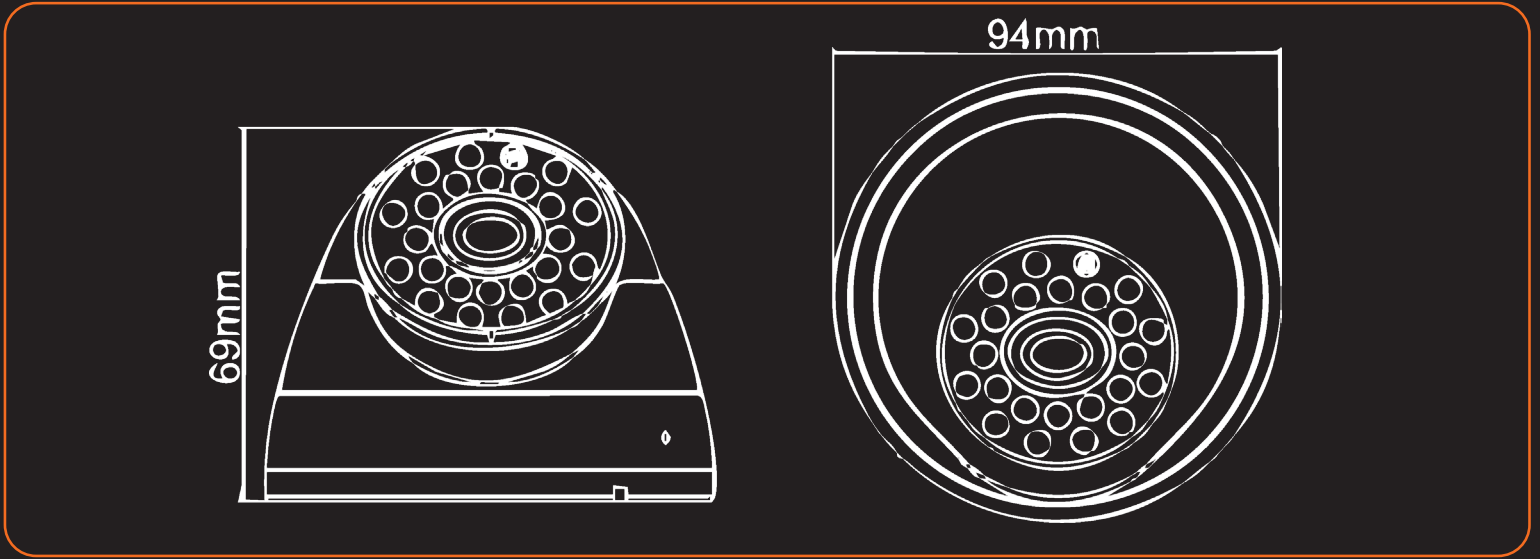
**OPERATIONAL**

<b>Video Signal</b>	TVI / AHD / CVI / 960H
<b>Resolution</b>	2592*1944
<b>Frame Rate</b>	25/30fps
<b>Video Output</b>	BNC
<b>Day/Night</b>	Yes
<b>OSD Menu</b>	Yes
<b>BLC Mode</b>	Yes
<b>WDR</b>	DWDR
<b>Gain Control</b>	AGC
<b>Noise Reduction</b>	3D
<b>White Balance</b>	Auto
<b>Smart IR</b>	Yes
<b>Audio Interface</b>	No

**GENERAL**

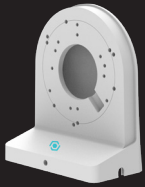
<b>Power Supply</b>	DC12V
<b>Power Consumption</b>	IR On: 600mA max., IR Off: Less than 200mA
<b>Operating Conditions</b>	-10°C ~ +50°C RH95% Max
<b>Storage Conditions</b>	20°C ~ +60°C RH95% Max
<b>Material</b>	Metal
<b>Dimensions</b>	92mmx64mm
<b>Weight</b>	360g

## DIMENSIONS



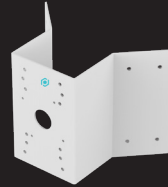
## COMPATIBLE ACCESSORIES

### WALL MOUNT SOLUTION



 **WMB2**  
WALLMOUNT BRACKET

### CORNER MOUNT SOLUTION



 **COMB6**  
CORNER MOUNT BRACKET

### POLE MOUNT SOLUTION



 **PMB6**  
POLE MOUNT BRACKET

### JUNCTION BOX



 **EB2BASE**  
JUNCTION BOX

DOWNLOAD THE SMART GUARDIAN APP

