

HIGH SPEED LICENSE PLATE RECOGNITION



The LPRB9Z832IP8MP-AI Security Camera offers exceptional 8MP resolution for crystal-clear surveillance, ensuring no detail is missed. Equipped with precise iris support, it captures high-quality images even in low light conditions. Experience superior night vision with Spectral Light technology, allowing you to see in full color even in total darkness. With features like two-way communication, 2X alarm, and 1X audio in/out, this camera is perfect for real-time interaction, advanced security management, and enhanced monitoring, day or night.



LPRB9Z832IP8MP-AI



8MP RESOLUTION



8-32MM LENS



IR UP TO 100M



SUPPORTS PRECISE IRIS



2X ALARM/1X AUDIO IN/OUT



SPECTRAL LIGHT - SEE IN FULL COLOR AT NIGHT



DUST, WATER & IMPACT RESISTANT



TWO-WAY COMMUNICATION



MICRO SD CARD SLOT UP TO 256GB



VIDEO

IMAGING DEVICE	1/1.8"
EFFECTIVE PIXELS	8MP 3840(H)×2160(V)
SCANNING SYSTEM	Progressive CMOS
MIN. ILLUMINATION	Color: 0.0008 Lux @ (F1.7, AGC ON); 0 Lux with IR

LENS

FOCAL LENGTH (ZOOM RATIO)	8-32mm (fast zoom)
MAX. APERTURE RATIO	F1.7 to F 1.76
ANGULAR FIELD OF VIEW	H:40(W)-14(T)° V:27(W)-10(T)° D:49(W)-17(T)°
MIN. OBJECT DISTANCE	W:1.5 m ~ INF, T:2.5 m ~ INF
IRIS TYPE	Precise iris

OPERATIONAL

IR LED	8
WARMLIGHT	4
IR VIEWABLE LENGTH	Up to 100m
WARMLIGHT VIEWABLE LENGTH	Up to 30m
TYPE OF COMPLEMENTARY LIGHT	Default warm light, switchable infrared light
MOTION DETECTION	Off/On (8 Level)
WIDE DYNAMIC RANGE	120dB
DIGITAL NOISE REDUCTION	3D DNR
IMAGE SETTING	Full Color Mode/Day&Night Mode/Smart Illumination
WHITE BALANCE	Auto/Manual
ELECTRONIC SHUTTER SPEED	1/5 ~ 1/20000s
ON-BOARD STORAGE	Micro SD slot, up to 256GB
ALARM	2 inputs, 2 outputs
AUDIO	1 input, 1 output, 1 Built-in microphone
AUDIO & LIGHT ALARM	1/1.8" Progressive Scan CMOS
DUAL MODES	Customizable Voice
DUAL LIGHT SOURCES	24/7 All-weather Color Images
CUSTOM VOICE	Yes
HARDWARE RESET	Yes
SMART FEATURES	Rare Sound Detection (SD), Face Detection (FD), Stationary Object Detection (SOD), Crowd Density Detection (CD), Human&Vehicle Detection (PD&VD), Line Crossing Detection (LCD), Queue Length Detection (QD), Heat Map (HM), Cross Counting (CC), License Plate Detection (LPD), Region Entrance and Exiting (RE), Intrusion
LPR VEHICLE SPEED	Up to 120km/h

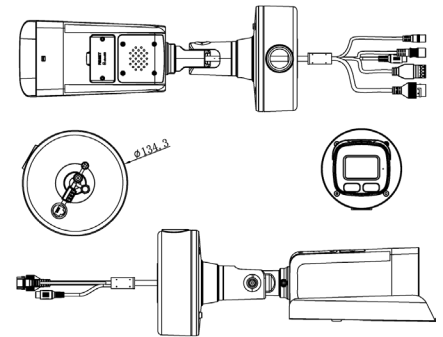
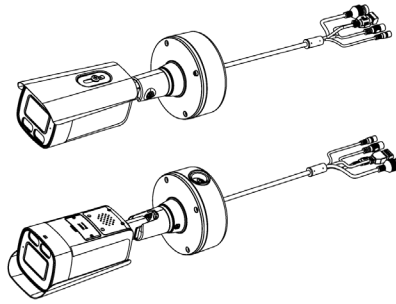
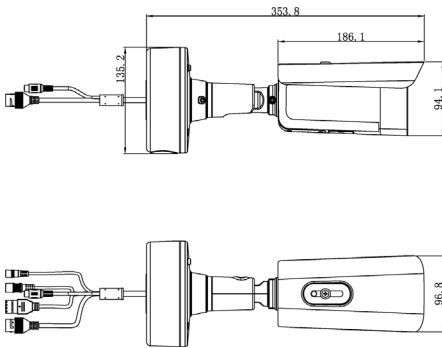
NETWORK

ETHERNET	RJ45(10/100BASE-T)
VIDEO COMPRESSION FORMAT	H.265/H.264/H.265+/H.264+/MJPEG
RESOLUTION	Mainstream 8MP(3840x2160), 5MP(3072x1728,2592x1944), 4MP(2592x1520), 3MP(2304x1296), 1080P(1920x1080), 720P(1280x720) Substream 1080P(1920x1080), 720P(1280x720), VGA(640x480) Mobile Stream VGA(640x480), QVG(320x240))
VIDEO QUALITY ADJUSTMENT	256Kbps ~ 16Mbps
BITRATE CONTROL METHOD	CBR/VBR
IP	IPv6
PROTOCOL	TCP/IP,HTTP,DHCP,DNS,DDNS,RTP/RTSP,SMTP,NTp,UPnP,SNMP,HTTPS,FTP
SECURITY	IP address filter:complicated password: Authenticated username and password
APPLICATION PROGRAMMING INTERFACE	ONVIF(Profile S/G/T)
COMPATIBLE WEB BROWSERS	IE10/11, Safari V12.1 above, Firefox V.52 above Google chrome V.57 above, Edge V.79 above

GENERAL

OPERATING CONDITIONS	-35~+60°C/less than ≤ 90% RH
INGRESS PROTECTION	IP67, IK10, NEMA 4X
INPUT VOLTAGE / CURRENT	D12V/POE
POWER CONSUMPTION	DC12V: max 10.24W; POE (48V): max 12.28W
MATERIAL	Metal
DIMENSION (LXHP)	353.8mm×135.2mm

DIMENSIONS



ACCESSORIES



TEBBASE1
JUNCTION BOX



WMB6
WALLMOUNT BRACKET

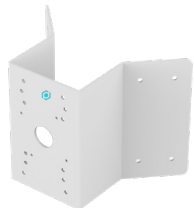


EB3BASE3-G
PENDANT

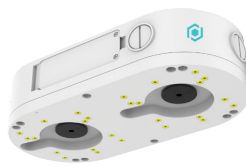
OR



WMB5
WALLMOUNT BRACKET



COMB6
CORNER MOUNT BRACKET



DBASEC
DOUBLE JUNCTION BOX



CMB6-EXT-120
EXTENDABLE CEILING MOUNT BRACKET



PMB6
POLE MOUNT BRACKET