



# PUBLIC VIEW **MONITOR**

OUR INNOVATIVE PVM MONITORS BOAST A RANGE OF FEATURES TAILORED FOR RETAIL SETTINGS





**Prevent Losses With Deterrence**



**Multiple Mounting Solutions Available**



**Cutomizable Advertisement Platform**



**Emergency & Storage Capabilities**



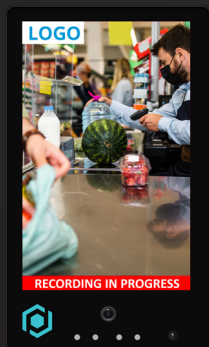
**Easy Set-Up & Installation**



**Manage Everything On One Software**

Boost loss prevention and customer engagement with our intelligent Public View Monitors—featuring built-in camera detection, real-time deterrence, dynamic ad scheduling, and emergency broadcast capabilities. Simple to install, easy to integrate, and packed with advanced features tailored for retail settings.

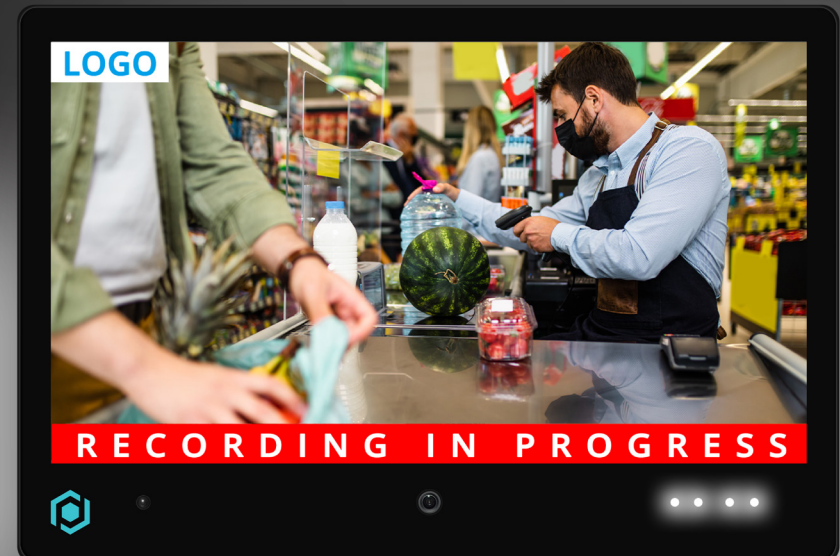
## *MULTIPLE SIZES AVAILABLE*



10"



22"



32"







# POE PUBLIC VIEW **MONITOR**



## *MOUNTING SOLUTIONS*



### **PMB-PVM10**

PVM 10" POLE MOUNT



### **WMB-PVM10**

WALLMOUNT FOR 10" PVM



### **CMB-PVM**

CEILING MOUNT FOR 22" & 32" PVM





# POE PUBLIC VIEW **MONITOR**

## **PREVENT LOSSES**

WITH OUR DETERRENCE FEATURES

### **PIR MOTION DETECTION**

When someone walks into a monitored zone, the screen springs to life — displaying live video or even a deterrent message.

### **VOICE PROMPTS**

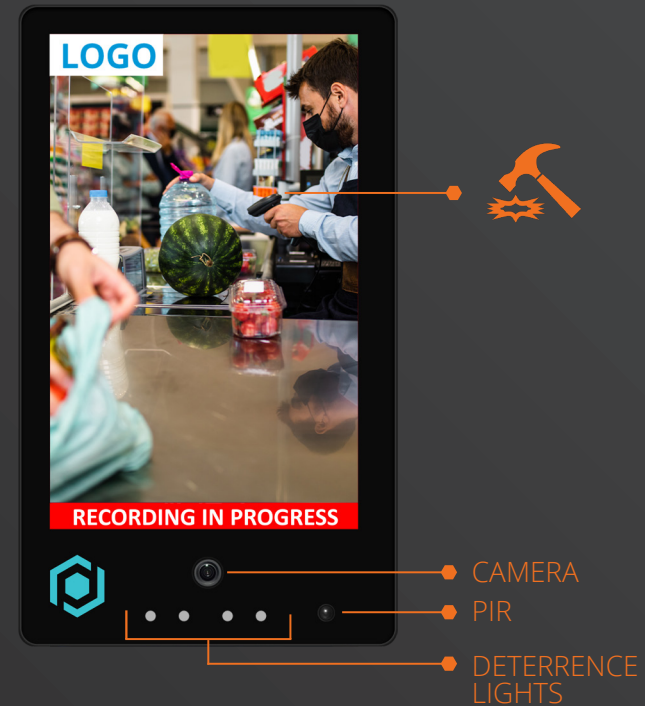
Play a custom welcome message or warning “Recording in progress,” or “Smile, you’re on camera” — to deter bad behavior early.

### **FACE, HEAD & HUMAN DETECTION**

Anyone loitering, peeking into aisles, or standing too long in a restricted zone? This monitor can spot it.

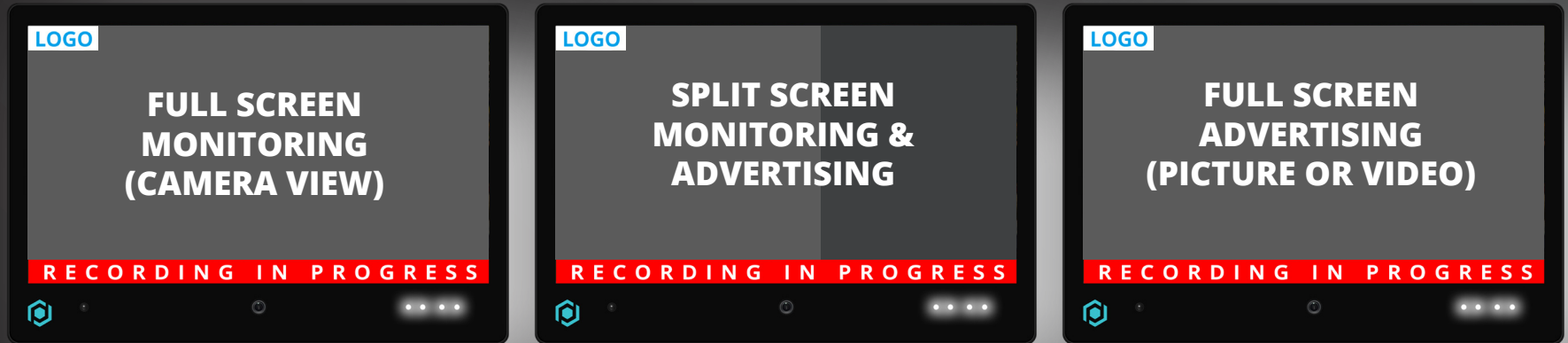
### **ALARM INTEGRATION**

Tie it into an existing alarm system. A person detected? Sirens, lights, or alerts will respond in real-time.





## ADVERTISEMENT PLATFORM **DRIVE ENGAGEMENT**



From promoting sales to building brand trust, this isn't just a deterrent — it's also an in-store marketing tool.

### **IMAGE & VIDEO ADS**

Play crisp visuals on a full or split screen—whether it's a looping MP4 or a branded PNG.

### **LOGO UPLOAD**

Your brand can be front and center positioned how you want on every screen, every time.

### **AD SCHEDULING**

Show the specials before in the morning and a clearance sale in the afternoon, or alternate your ads daily.

### **PLAYLISTS**

Rotate through ads like a digital slideshow — perfect for promotions, store branding, or safety reminders.





# POE PUBLIC VIEW **MONITOR**

## DESIGNED FOR INSTALLERS **LOVED BY USERS**



### **PLUG-AND-PLAY WITH ONVIF & RTSP**

Already have a recorder or a network stream? Just connect and go.



### **AUTO-BRIGHTNESS SCHEDULING**

Set brightness to drop at night and rise with the sun — no manual adjustment needed.



### **MULTIPLE POWER OPTIONS**

Run it over PoE++, 12V DC, or Wi-Fi — perfect for hard-to-wire areas.

## EMERGENCIES & STORAGE CAPABILITIES **STAY READY FOR ANY EMERGENCY**



### **UP TO 1TB OF STORAGE**

An optional micro SD card slot means storing weeks or even months of footage directly on the unit — no NVR required.

### **INSTANT EMERGENCY MODE**

One trigger, and every screen in the building can instantly show a warning or evacuation video. Connect to a fire panel or panic button — when it's pressed, the monitors respond immediately. The following file formats are supported: JPG, PNG, GIF, MP4, MOV.

In a fire, active shooter scenario, or lockdown — these screens can save lives by showing critical visual instructions.





# POE PUBLIC VIEW **MONITOR**

MANAGE EVERYTHING **ON ONE SOFTWARE**

**PVM PRO WEB INTERFACE**

PreviewBackUpSettings

Main StreamSub Stream

**OUR PVM PRO WEB INTERFACE IS EQUIPPED WITH ALL THE TOOLS YOU NEED TO MANAGE YOUR PVM**

**CONTENT SCHEDULING**

Use the built-in scheduler to push promotional videos, safety messages, or custom deterrent content based on time of day, store traffic, or location.

**LIVE VIEW & PLAYBACK**

Access real-time video streams on live view or review up to 2 months of recorded footage directly from the web interface.

**PRIVACY & ACCESS CONTROL**

Define user roles, manage permissions, and ensure that only authorized personnel can access sensitive footage or system controls.

**CONFIGURATION TOOLS**

Fine-tune settings like motion detection zones, face capture preferences, brightness levels, and more—tailored for each environment.

