



POE & WiFi DOORBELL

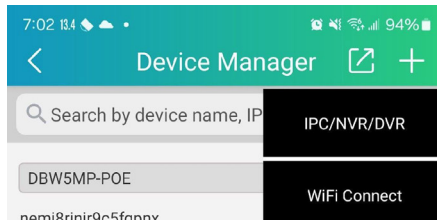
Quick Installation Guide

1.Connecting via Wi-Fi

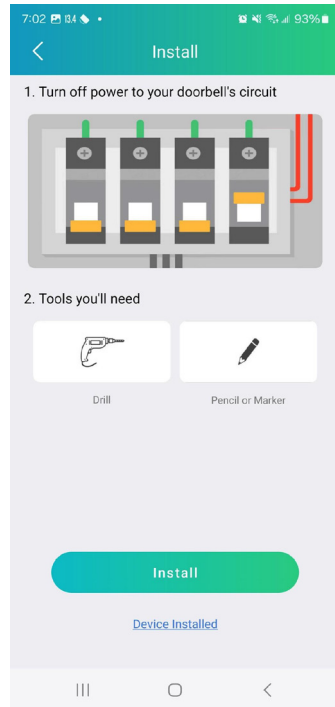
First, ensure that the doorbell is adequately powered. It requires 16-24V and 10VA if using AC power. If using POE, it only requires standard POE (.af) for power.:

Once the doorbell is ready and in **pairing mode**, you will see the **red light flashing slowly**, and it will say: "Please configure network settings with the app."

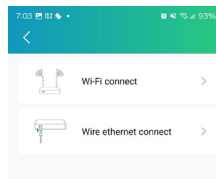
Now open the **Smart Guardian** app, click on the **three bars**, go to the **Device List**, click the + icon, and then select **WiFi Connect**.



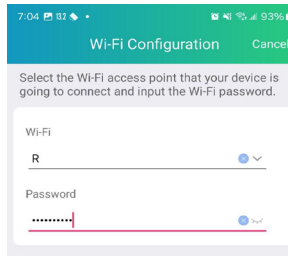
Using your smartphone's camera, **scan the QR code** located behind the doorbell.
If you are **not using a mechanical chime**, click on Device Installed.
If you are **using a mechanical chime**, click on Install, **select Mechanical Chime**, and follow the physical installation instructions of the chime kit. Once done, click on I have finished installing.



Then, click on Wi-Fi Connect. Next, select Red slow flashing on the next screen.

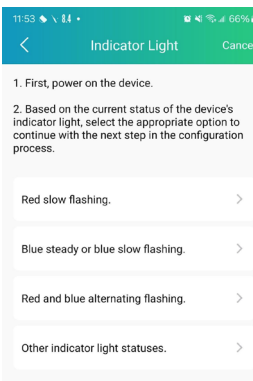


Next, enter the Wi-Fi network name and password that you want the doorbell to connect to, and click Next.



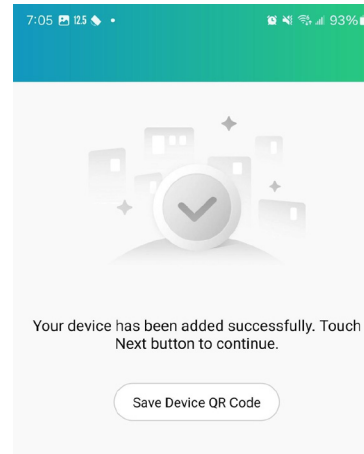
You will now be prompted to set a password for the doorbell. The password must be 8-16 characters long and must include two of the following four types of characters:

- Uppercase letters
- Lowercase letters
- Numbers
- Special characters

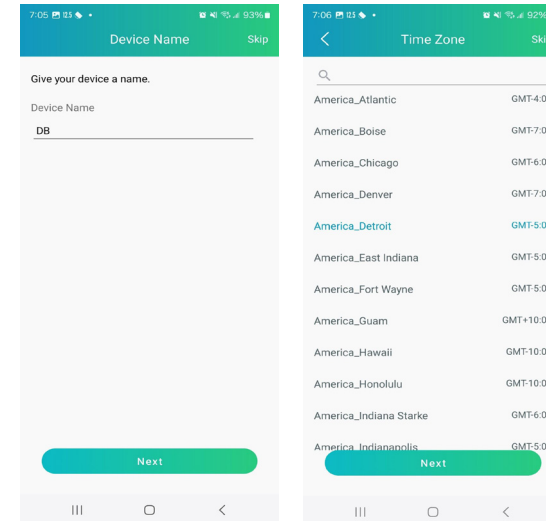


You will now hear the doorbell say: "Wi-Fi is connecting, please wait." Once connected, it will say: "Wi-Fi configured success."

In Smart Guardian, it will indicate that the device has been added successfully. You can click Save Device QR Code, then click Next.

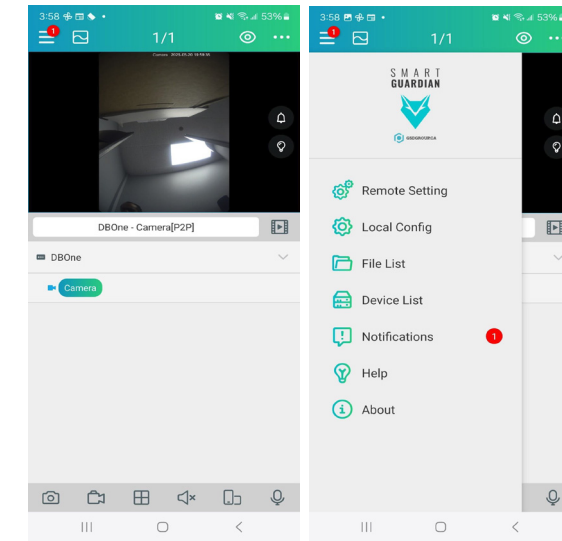


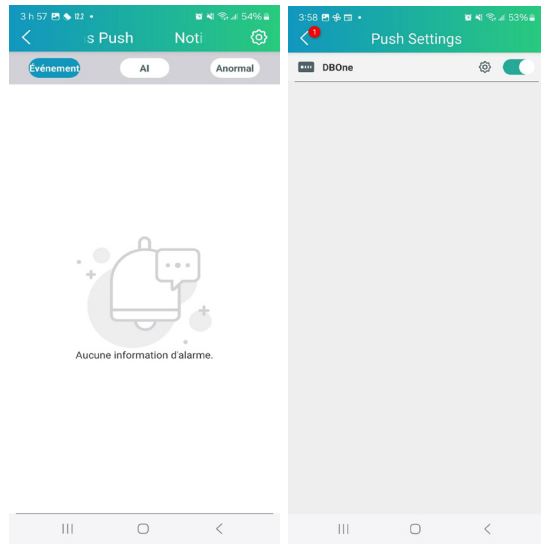
Now, give the doorbell a name (this is the name you'll see in the Smart Guardian app), then click Next. Finally, select a Time Zone to ensure the correct time is displayed, then click Next.



You should now see the doorbell in your Device List.

The next step is to turn on the notifications for the doorbell. You need to click on the 3 bars and click notifications, here click on the gear button on the top left. Now make sure the switch beside the doorbell is on, if it's not then tap on it and once it's on, it should turn green.





You may now format the microSD card (if microSD card is installed) and the device will be ready for use. (See How to Format microSD card in the next section)

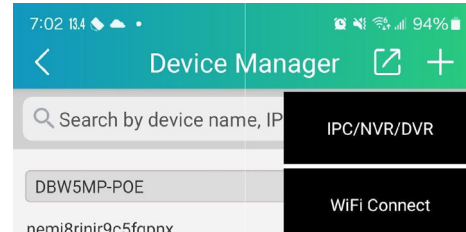
07

2.Connecting via POE with Wired Internet Access

If your POE connection has internet access and your doorbell does not require Wi-Fi, follow the instructions below.

With this method, the doorbell will show a solid blue light when ready, as it should automatically connect to the internet.

Open the Smart Guardian app, click on the three bars, go to the Device List, click the + icon, and select IPC/NVR/DVR.



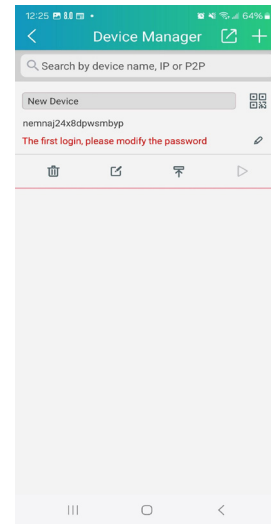
You may now **either scan the QR code** behind the doorbell, **or select Online Search** and choose the doorbell, and you'll be prompted to enter the device password.

The default password is: admin123. (Note the period at the end). Click Save. The device will now appear in your Device List, but it will say: "The first login, please modify the password." There will be a pencil icon beside this message. Click on the pencil to set a new password. The new password must be 8-16 characters long and include at least two of the following:

- Uppercase letters
- Lowercase letters
- Numbers
- Special characters

Re-enter this password in the Verify Password field, and click Save.

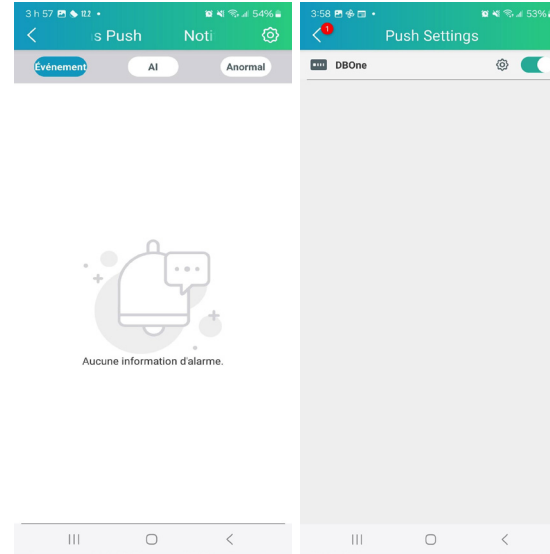
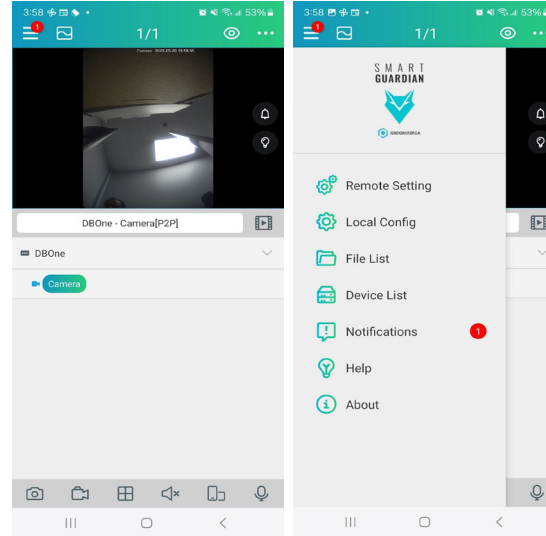
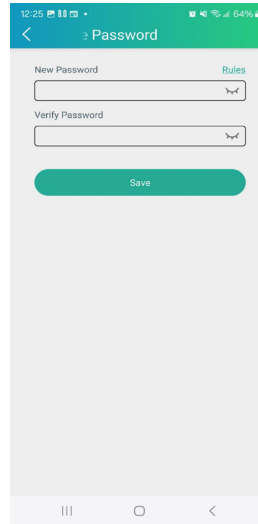
08



Note: **To change the device name, click the Play button** under Device List. You will now see the video stream and the current (default) device name. **Long press the name**, and a prompt will appear to **Modify Device Name**. Enter a name of your choice, then click OK.

The next step is to turn on the notifications for the doorbell. You need to click on the 3 bars and click notifications, here click on the gear button on the top left. Now make sure the switch beside the doorbell is on, if it's not then tap on it and once it's on, it should turn green.

09



You may now format the microSD card (if microSD card is installed) and the device will be ready for use. (See How to Format microSD card in section 3)

11

3.How to format the SD Card

To Format the SD Card:
Click on the 3 bars on the top left in Smart Guardian and then click on "Remote Setting".

Click on the device, now click on Storage, expand HDD and select HDD then you will see your microSD listed if it is seen by the doorbell. You may click Format. You will get a prompt that all contents of the microSD will be deleted, if you agree, click OK.

It will then prompt you for the password of the doorbell, enter it and click OK.

4.Adding Extra Electronic Chimes

To add additional electronic chimes to the doorbell:

Plug in the extra chime.

Wait 30 seconds, then press and hold the gear icon button for 3 seconds. The chime will begin flashing blue, indicating it is in pairing mode.

On the doorbell, press the reset button 3 times. The doorbell should flash green, indicating it has paired successfully.

If it does not pair, repeat the process.

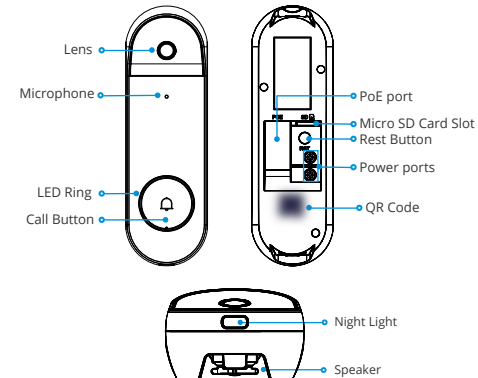
12

What's in the Box



13

Installation Introduction



LED Status	Device Status
Red light is on	Device is booting
Red light flashing slowly	Status of the distribution network
Blue light stays on	Device is operating normally
Red and Blue lights flashing alternately	Device is lost network connection
Lights off	Device is powered off

14

Install the Video Doorbell

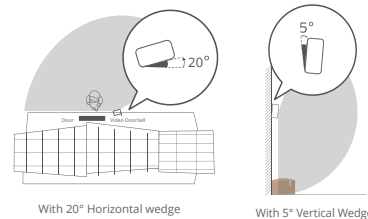
Before getting started, turn off the power at the breaker, and make sure that no power is going to your doorbell system.

Step 1. Mark Mounting Holes

Place the mounting bracket to fit your existing doorbell wiring and then use it to mark the screw holes.

Step 2. Attach the Angled Wedge to the Mounting Bracket (Optional)

Attach one of the mounting wedges to the mounting bracket if you want to adjust the angle of your doorbell for a better view.

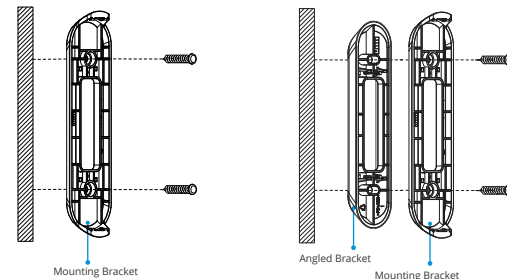


Step 3. Install Wall Anchors (Optional)

If installing on stucco, brick, or concrete, use the provided drill bit to drill holes where marked, and then insert the included wall anchors. For wood, drywall or soft surface, skip this step.

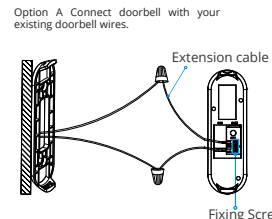
Step 4. Secure the Mounting Bracket

Lead the doorbell wires through the hole on the mounting bracket, and then secure the bracket to the mounting surface with a Philips-head screwdriver and supplied mounting screws.

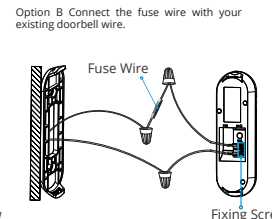


Step 5. Connect Wires (WIFI)

If you have a chime installed, follow Option A; if not, follow option B. Option A Connect doorbell with your existing doorbell wires.



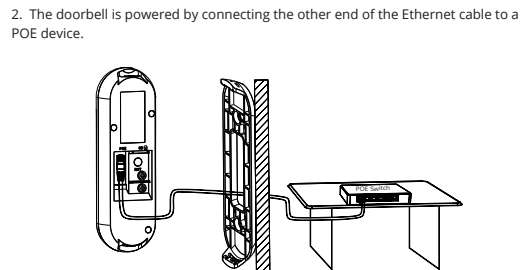
Power Supply: 16 to 24 VAC



Power Supply: 16 to 24 VAC

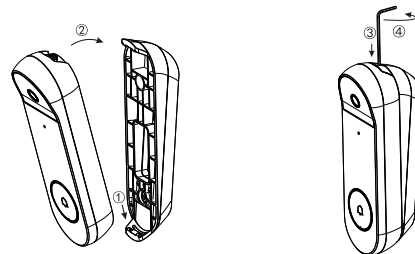
Step 6. Connect Wires (POE)

1. Run the Ethernet cable through the mounting plate and the hole on the wall to connect it to the doorbell, then attach the doorbell to the plate.



Step 7. Mount the doorbell

1. Install the doorbell to the mounting bracket.
2. Tighten the security screw in the top of the mounting plate to secure the doorbell.



17

Install the Chime Kit

The chime kit is used to regulate power to your existing chime so that your doorbell will function properly. Before getting started, turn off the power at the breaker, and make sure that no power is going to your doorbell system.

Step 1 Remove the cover of your existing chime box, and then find terminals labeled as "FRONT" and "TRANS". The chime kit look different depending on if you have a mechanical or electronic chime.

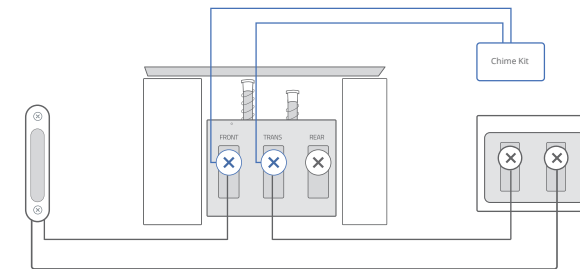
Step 2 Loosen "FRONT" and "TRANS" terminal screws. If there are no markings, simply loosen the two terminals that wires are connected to. Be sure not to detach any connected wiring.

Step 3 Connect the wire harness to the chime kit.

Step 4 Connect either one of wires from the chime kit to the "FRONT" terminal and the other one to the "TRANS", and then tighten the screws. Be sure the existing wires are attached.

Step 5 It is recommended that you attach the chime kit to the inside of your chime with the adhesive provided. Make sure that the kit and its connected wires will not interfere with chime's operation.

Step 6 Replace the chime cover.



Existing Doorbell Button at your front door Existing chime in the house Doorbell Transformer

Clear Chime Memory

Hold the pair button for 15 seconds until you see the blue light on the electronic bell flash very slowly for 3 seconds. This indicates that the pairing information for the electronic chime has been successfully cleared.



19

For more information, please visit our YouTube channel:



To download our latest firmware and software, please visit gsdgroupinc.com

GSDGROUPINC.COM

20