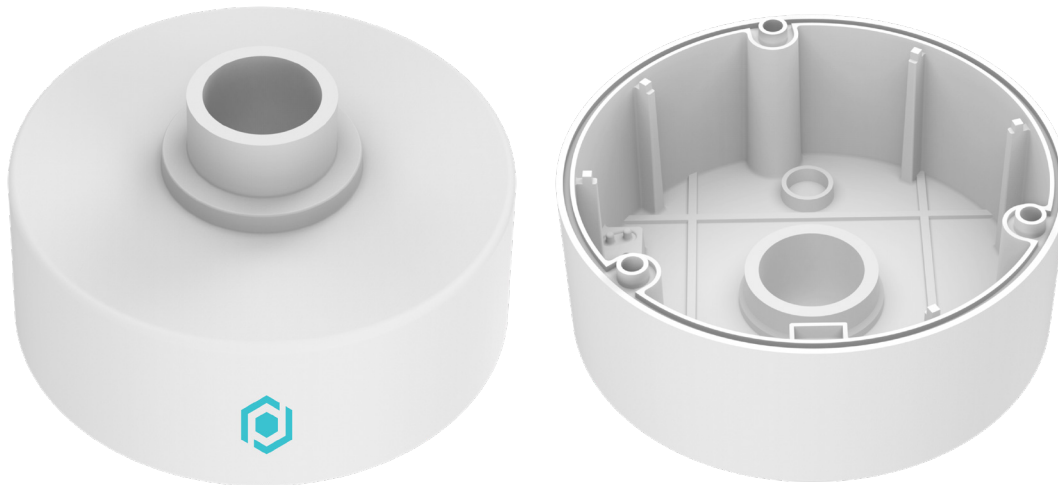


# SUSPENDED JUNCTION BOX



The D2BASE1-G Suspended Junction Box is a versatile and high-performance solution designed specifically for use with D2 and FLF camera housings. Offering a suspended design, this junction box allows for flexible installation in environments where space is limited or where overhead mounting is preferred. It provides secure, organized cable management while ensuring that your camera connections remain protected from the elements, both indoors and outdoors.

