

# LUXICAM



## WIFI DOORBELL

### Quick Installation Guide

GSDGROUPINC.COM

Thank you for using SmartCam View. Please setup the camera by following the steps below :

1. In order to connect the camera stably, please install it in the range that could strongly accept the Wi-Fi signal of the home wireless router. Before installing the camera, please determine the installation location (flat surface or wall). When the camera is installed in a place where it is difficult to obtain Wi-Fi signal, please use a Wi-Fi extender to extend the Wi-Fi network range.

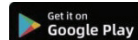
2. Connect power adapter to the camera. Please keep the wires away from children to avoid any potential danger. In order to get the best image quality, please don't touch the camera lens with your hands. Please make sure to use the matching power adapter cable, or the camera may not work properly.



### 1.App Installation

#### 1. Download the APP

- Download the "SmartCam View" app from the App Store (iOS devices) or Google Play (Android devices).



01

Scan the QR code below to download the APP



For iOS



For Android

2. Connect the doorbell and plug the power adapter into a power outlet. Wait until the doorbell status LED turns red.

3. Create an account and tap "Add Device" to add a device into your device list, follow the instructions to complete the setup.

Recommended system specifications  
Wi-Fi 802.11 b/g/n  
iOS 11.0 or higher  
Android OS 6.0 or higher

Application pre-check function

Make full use of SmartCam View to monitor your home (the supported functions may be varied by different models) :

Event notification

Motion/Human/Vehicle/Package/Sound detection

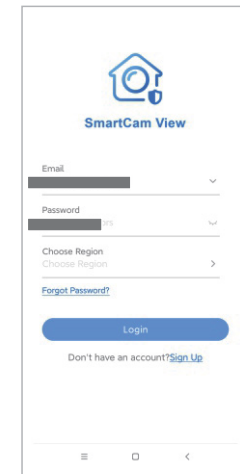
Customized real-time monitoring

Voice intercom

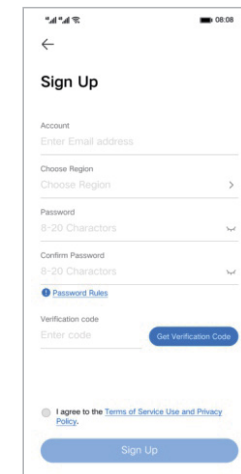
02

### 2.Register an account

Run SmartCam View, then tap <Sign Up>.

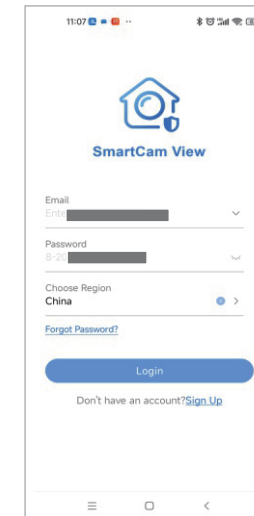


Input user's information then tap <Get Verification Code>. Verification code will be sent to your email. Input the verification code, read and accept the relevant privacy policy, then tap <Sign Up>.

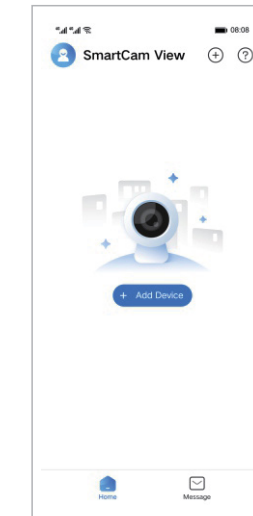


03

Return to the login interface, input user name and password, choose Region, then tap <Login>.



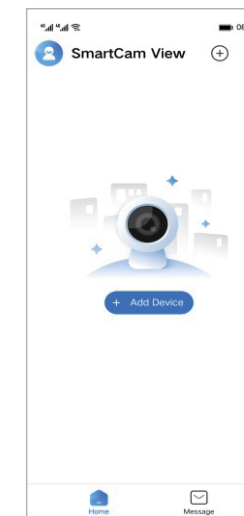
After tap <Login> will reach the Home menu.



04

### 3.Adding a device

Tap button <Add Device> in the middle of Home menu.



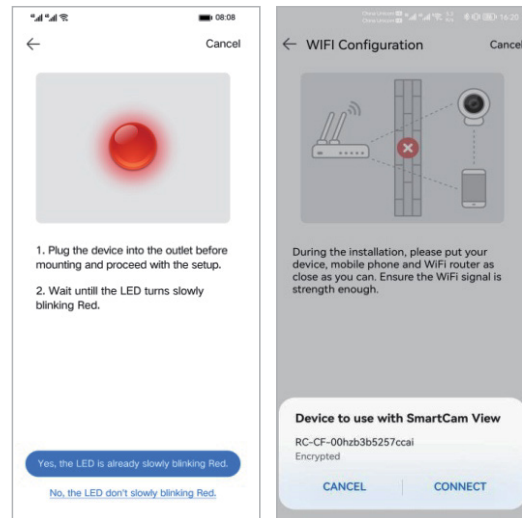
Aim the scanning window at the QR code on the chime.



05

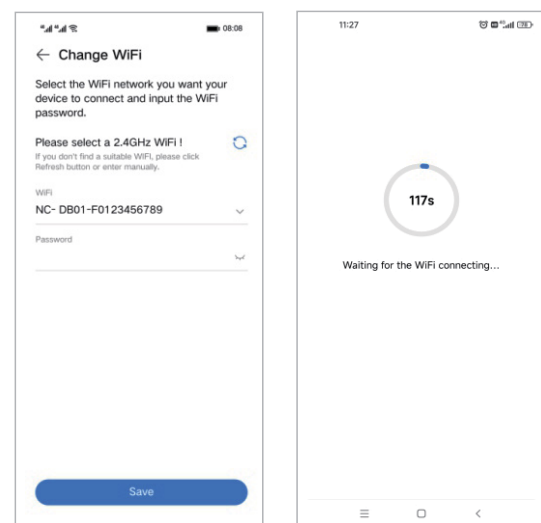
Tap button <Yes,The LED is already slowly blinking Red> when the camera LED is blinking in red.

Tap button<CONNECT> to connect to doorbell hotspot.



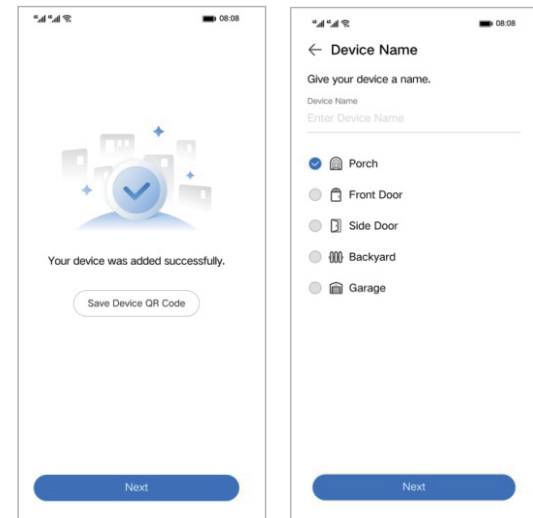
Select a 2.4 GHz WIFI network for the doorbell to connect and input the WIFI password, tap button <save> to connect WIFI.

Waiting for the WIFI connecting.

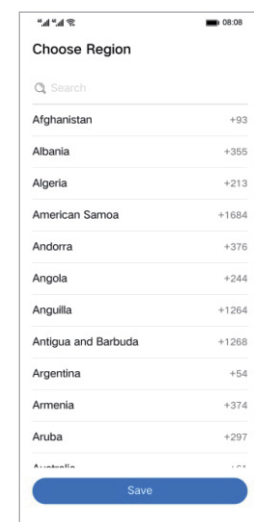


Device was added successfully and tap <Next>.

Set a device name, you can choose or customize a device name you want.



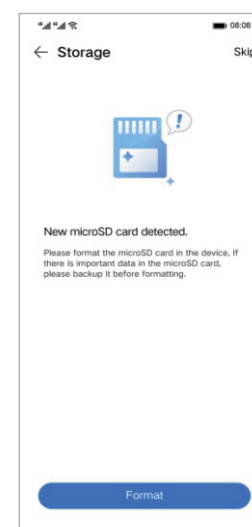
Choose the accurate region in where you want to setup your devices.



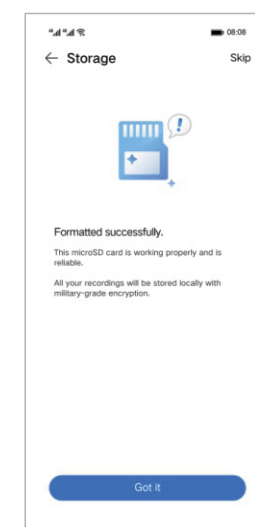
Please insert micro SD card and tap <Next> to format Micro SD. If you forgot to insert Micro SD, you can insert Micro SD and tap <Check again>



Tap <Format> to format micro SD card.



Tap <Got it> after formatting successfully.



For more information, please visit our YouTube channel:



To download our latest firmware and software, please visit [gsdgroupinc.com](http://gsdgroupinc.com)