

EYEBALL HD ANALOG CAMERA

Enhance your security setup with the Eyeball EB2FD28TVI-5MP analog camera. Boasting a remarkable 5MP resolution and a wide 2.8mm lens, this camera provides unparalleled clarity and a broad field of view for comprehensive surveillance. Whether you're safeguarding your home or business premises, this analog camera delivers top-notch performance in any environment.

This camera model is also available in black - EB2FD28TVI-5MP-B



EB2FD28TVI-5MP



5MP RESOLUTION



2.8MM WIDE LENS



IR UP TO 20M



WATERPROOF
AND DUST-TIGHT



TVI-CVI-AHD-960H



POWER 12V/DC

CAMERA

IMAGING DEVICE	1/2.7" CMOS (SC4653)
EFFECTIVE PIXELS	5.0 Mega Pixels
SCANNING SYSTEM	progressive scanning
ELECTRONIC SHUTTER SPEED	1/25s-1/50,000s , 1/30s-1/60,000s
MIN. ILLUMINATION (DAY)	Color 0.01Lux@F1.2
MIN. ILLUMINATION (NIGHT)	B/W 0.001 Lux@F1.2
S/N RATIO	More than 50dB (AGC OFF)
IR DISTANCE	20M
IR ON/OFF CONTROL	Auto
IR LEDES	18 pieces SMD LEDES

LENS

LENS TYPE	2.8mm
MOUNT TYPE	Fixed
FOCAL LENGTH	no
MAX APERTURE	F2.0
ANGLE OF VIEW	120°
FOCUS CONTROL	no

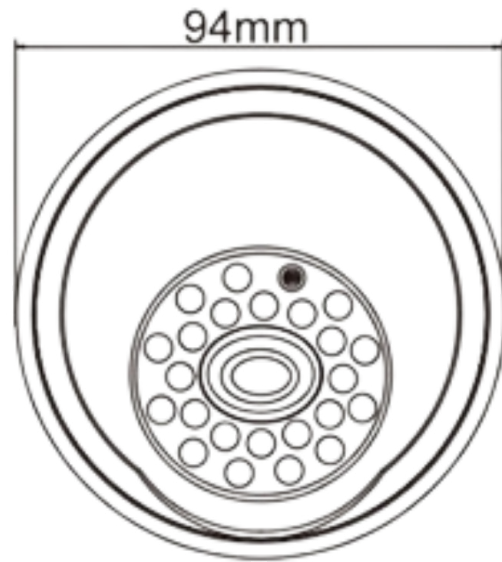
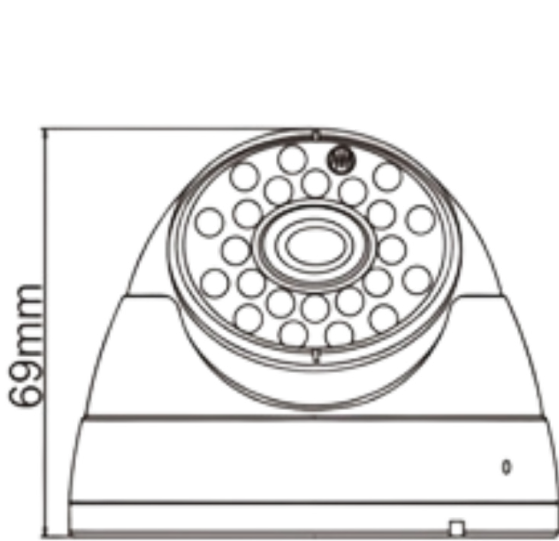
VIDEO

VIDEO SIGNAL	TVI / AHD / CVI / 960H
RESOLUTION	2592*1944
FRAME RATE	25/30fps
VIDEO OUTPUT	BNC
DAY/NIGHT	YES
OSD MENU	YES
BLC MODE	YES
WDR	DWDR
GAIN CONTROL	AGC
NOISE REDUCTION	3D
WHITE BALANCE	Auto
SMART IR	YES
AUDIO INTERFACE	NO

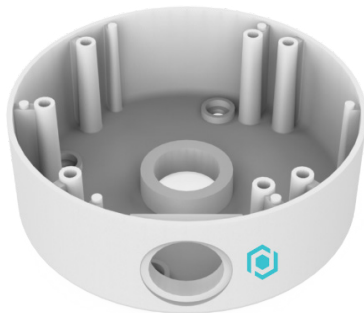
GENERAL

POWER SUPPLY	DC12V
POWER CONSUMPTION	IR On: 600mA max., IR Off: Less than 200mA
OPERATING CONDITIONS	-10°C ~ +50°C RH95% Max
STORAGE CONDITIONS	20°C ~ +60°C RH95% Max
MATERIAL	Metal
DIMENSIONS	92mmx64mm
WEIGHT	360g

DIMENSIONS



ACCESSORIES



 **EB2BASE**
JUNCTION BOX



 **WMB2**
WALLMOUNT BRACKET

2024 Global Surveillance Distribution, G.S.D Group and G.S.D are registered trademarks of Global Surveillance Distribution Group, Inc. in Canada and / or other countries. We reserve the right to change the design and specifications of the product Without notice and without incurring any obligation.